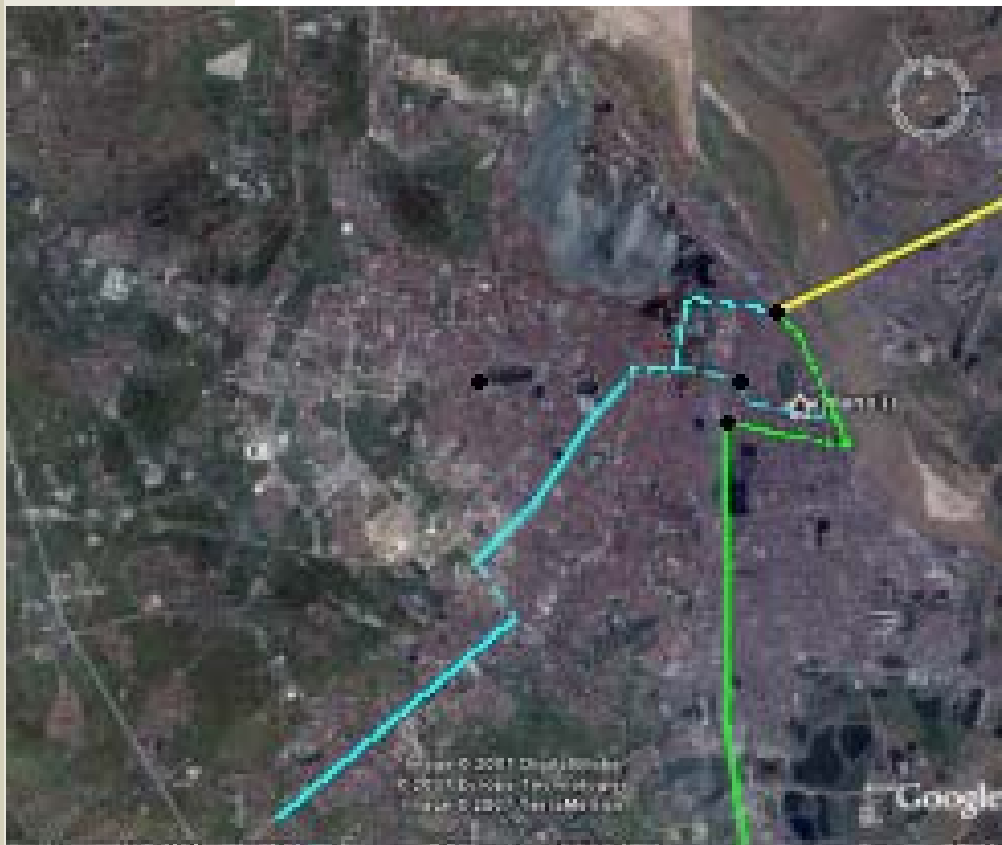


# Vision of Public Transport Development Hanoi

Possibilities 2008 – 2012 - 2020

# 2008



- ✦ Regional rail, phase 1: yellow.
- ✦ BRT blue and green solid.
- ✦ BRT/express bus on existing roads: blue and green dotted.
- ✦ Intermodal interchange: Long Bien

# 2012



- ☀ Regional Rail Phase 2 or 3: yellow.
- ☀ Metro Center – Nhon: pink.
- ☀ BRT green and blue.
- ☀ Interchange stations: black

# 2020



- 🚗 Metro: red and green
- 🚗 Regional Rail: yellow
- 🚗 BRT: blue.
- 🚗 Intermodal interchange stations > black